

SMALL BOX HUGE CONTENT



BLUEPIRAT
BY MAGNA

The **blue PiraT Mini** is the smallest data logger in its class – with an outstanding functional scope.

Key features:

- The smallest data logger in its class with an outstanding functional scope
- Wide range of interfaces, e.g. 4 Ethernet (Gbit-Phy)
- Flexible, future-proof expandability via System Link
- Stable temperature behavior and very low energy consumption
- Light as a feather: only 257 grams
- Internal 64 GB memory and additional SD card slot
- WiFi and GPS extension available

Now also with
CAN-FD
interface!

Find out more:

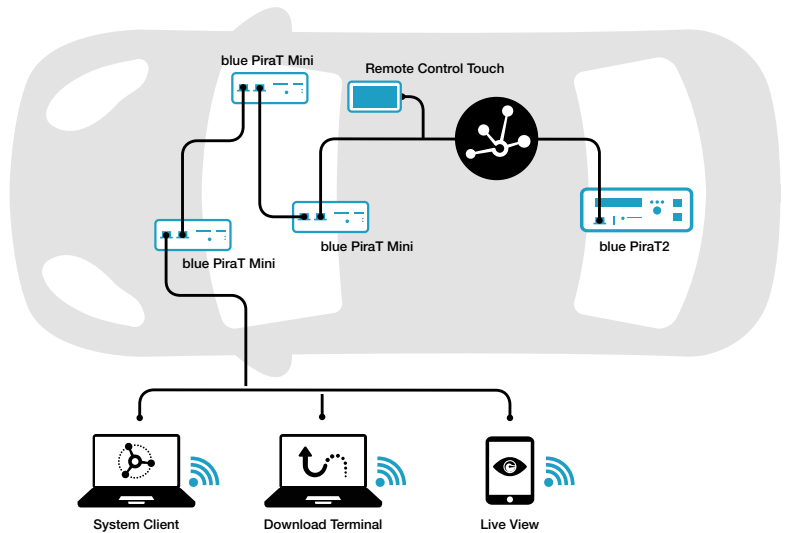
www.telemotive.de or TMO.sales@magna.com

Flexible and expandable – System Link

Build your measuring system from modules or expand your existing system quickly, easily, and flexibly. System Link combines blue PiraT data loggers in one network so they can be operated as a single device.

Convenient: Extensions and accessories

Would you like to start evaluation during the test drive? Expand your data logger with Live View! Or use Download Terminal to collect, sort and distribute your test data. A very handy accessory is the mounting bracket for the blue PiraT Mini. And with our extensions you can tailor your blue PiraT Mini perfectly to your needs!



Supported interfaces blue PiraT Mini

Interfaces	Models	CAN		LIN		MOST		FlexRay
		8 CAN	4 CAN-FD	8 LIN	20 LIN	150 optical	150 cPhy	2 FR
CAN-FD	-	-	4	-	-	-	-	-
CAN-HS	8	4 (via CAN-FD)	2	1	2	2	4	
CAN-LS	1	1	1	1	1 (via CAN-HS#2)	1 (via CAN-HS#2)	1	
LIN	2	2	8	20	-	-	2	
Ethernet (1 Gbit/s)	4	4	4	4	4	4	4	
BroadR-Reach®/100Base-T1	2	2	-	-	-	-	-	
MOST150	-	-	-	-	1 (optical)	1 (cPhy simplex oder duplex)	-	
FlexRay	-	-	-	-	-	-	2	
USB 2.0 Device / Host	1	1	1	1	1	1	1	
Analog / Digital IN	3	3	3	3	3	3	3	
Digital OUT	2	2	2	2	-	-	2	
Seriell RS232	5	5	5	1	4	4	5	
ECL (Electronic Control Line)	-	-	-	-	1 (via RS232)	1 (via RS232)	-	

Technical specifications blue PiraT Mini

Voltage range	5 ~ 29 V, start-up from 7 V
Current consumption	< 370 mA (typical), < 1 mA (standby)
Start-up time	< 210 ms
Temperature range	-40°C - +70°C; MOST cPhy: +60°C; 20 LIN: +65°C
Time-stamp resolution	1 µs
Wake-up via	Bus activity (CAN, LIN, RS232, MOST, FlexRay), KL15
Dimensions	105 x 33 x 85 mm (W x H x D)
Memory	64 GB